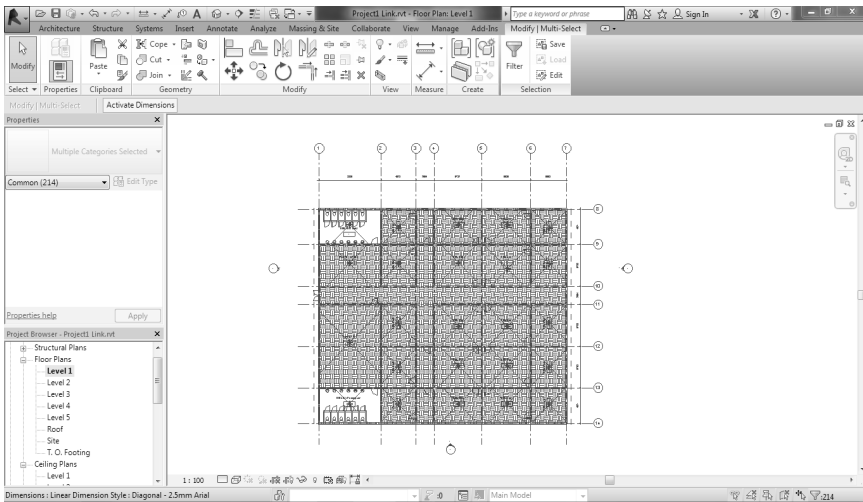


## CHAPTER 3

# REVIT ARCHITECTURE - OTHERS

This chapter presents the work step adopted for the BIM model using Revit Architecture. It also discusses the scopes and components of the Revit Architecture software, and concludes by showing the requirements necessary for effective use of model detailed design (LOD 300).

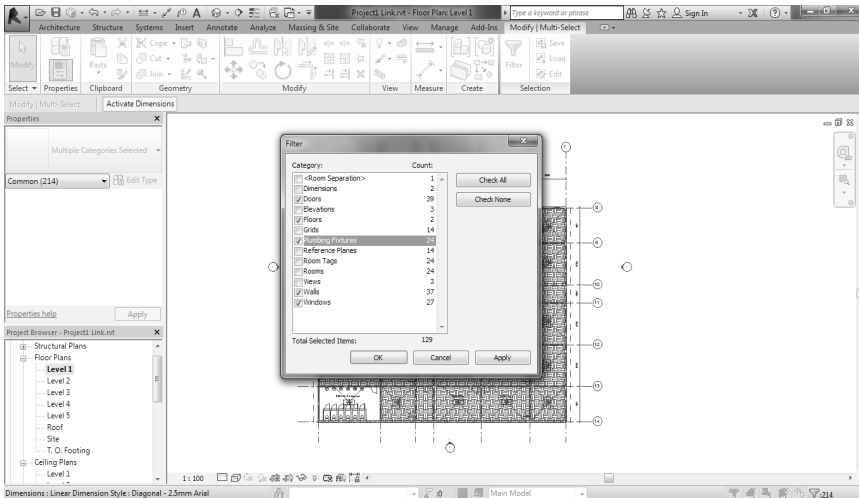
## 3.1 Copy Paste Aligned (Level 2, 3, 4 & 5)



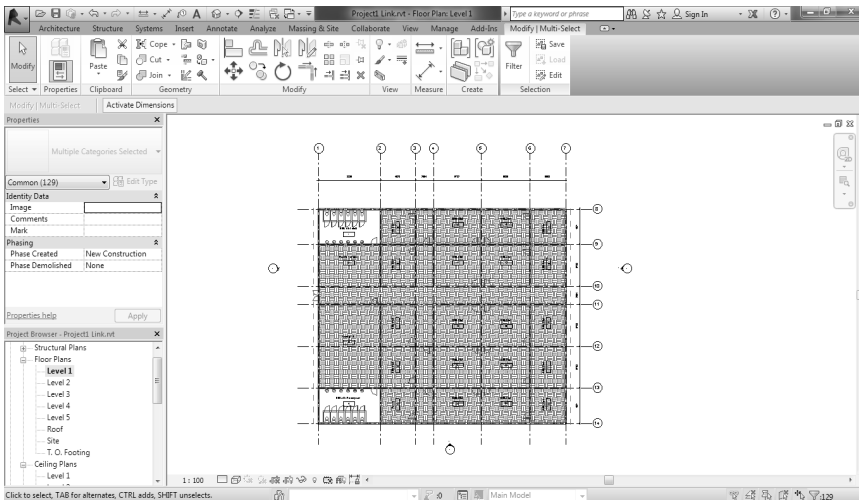
Select all the element around everything. In the modify/ multi-select tab, go to selection panel. Then click filter button.

# BIM MODELLING TECHNIQUES FOR IBS BUILDING

## Practical Guidance for Constructions Professionals



**In the filter screen, click check none. Then check doors, floors, plumbing fixtures, walls and windows. Click ok.**



**Go to clipboard panel and click copy to clipboard button.**